

CLEAN *sweep*

A skilful reworking of a Sydney heritage home adapts to the ever-changing needs of family life.

STORY *Chris Pearson* | PHOTOGRAPHY *Simon Whitbread*



HALLWAY Walls painted Resene Half Truffle, with trim in Resene Alabaster. 'Claude' pendants in Glazed Linen, and 'Cordoba' lamp in Gilded Iron, Bloomingdales Lighting. Decorative bowl and beads, Orient House. Amelie 'Curve' console in White Marble and Antique Brass, GlobeWest. 'Hyde Plank' oak flooring, Havwoods. **EXTERIOR** Walls painted Resene Half Truffle, with trim in Resene Alabaster. 'Canto Maxi 2' wall lights in Brass, Urban Lighting. Garden installed by HW Landscapes.

Proposed by *Yvonne J. J. J.*

This light-filled home on Sydney's Lower North Shore has grown and matured with its owners like a much-loved member of the family. When Kate and Andrew bought the Federation semi in 2009, they were seduced by the generous yard and the swimming pool, perfect for their active daughters, Poppy and Rosie, then aged five and three. But years later, the girls didn't even dip their toes in it and it gathered drifts from a flowering jacaranda.

Meanwhile, a mid-90s, two-storey extension told a similar story. Its rumpus room upstairs was bliss for sleepovers and knockabout

activities, but, as their children grew, "popping in and out of our lives, with friends in tow", says Kate, more grown-up solutions were needed. And serial renovations had produced odd-shaped rooms. "With lots of angles and hexagons, there wasn't a square room in the place."

In 2022, the couple hired Tim West of THW Architects and interior designer Kristie Rumble of Acton & Rumble to update their home. The brief? "Both Kate and Andrew love to entertain," says Kristie. "They wanted an unpretentious home with a practical kitchen and a bench for six people to gather around, but also cosy for just the two of them." Also topping the wish list was an enclave for their grown-up daughters. ▶

LIVING Custom sofa in Carlucci 'Sincerity' fabric from Unique Fabrics. Joinery in Elton Group 'Evenex' in Tuscan Oak. 'Luna Swivel' armchairs in linen, and 'Max' coffee table, Coco Republic. 'Akola' petal-cushion, Walter G. Verona 'Allure' side table in White Marble and Antique Brass, GlobeWest. 'Stripes' stone tiles on fireplace, National Tiles. Polaris 1000 Electric Fire, Jetmaster. 'Etna' rug in Soft Beige, Robyn Cosgrove Rugs. **DINING** 'Seattle' chandelier in Alabaster and Brass, Bloomingdales Lighting. Joinery in Elton Group 'Evenex' in Tuscan Oak. Ethnicraft 'Bok' dining table, GlobeWest. 'Frida' dining chairs in Antique Tan, Coco Unika. Custom blind in Walter G 'Luxor Guava' linen, Marlow & Finch. 'New Morocco' rug in Natural with Chocolate, Robyn Cosgrove Rugs. **OUTDOOR** 'Trinity' fan, ThreeSixty. Joinery in Resene Alabaster. 'Architect' sofa and armchairs in Natural and Light Grey, and 'Monaco' round coffee table in Concrete, all Coco Republic. 'Saqqara' outdoor cushion in Atlantic, Walter G. Enhanced Grain flooring in Golden Oak, Millboard.

THE PALETTE

Resene Truffle
(walls throughout)

Resene Alabaster
(kitchen/pantry joinery and trims)

Resene Quarter Truffle
(kitchen)

Paint colours are reproduced as accurately as printing processes allow.

THIS IS THE LIFE

The kitchen is the hub of the home. "Andrew is the cook and we often have six people gathered around that huge bench. We live there," says Kate. While the bench is monumental, it's also inviting. "It's soft and beachy. Everyone touches it." With the stacked doors connecting the kitchen to the barbecue area, the couple and their guests drift outdoors as the weather warms up.

KITCHEN Walls painted Resene Quarter Truffle. 'Split Tube' ceiling lights in White, Est Lighting. Joinery in Elton Group 'Evenex' in Tuscan Oak, and Resene Alabaster, by Interspec. 'Curve' pull handles in Bronze, Lo & Co. Dekton island bench in Liquid Shell, and bench and splashback in Uyuni, Cosentino. Oliveri 'Essente' gooseneck pull mixer, Winnings. Appliances, Harvey Norman. Bar stools, owners' existing. 'Hyde Plank' oak flooring, Hawwoods.

"For the overall look, we wanted lightness and brightness, but with a bit of fun, with pops of colour, especially pink, to remind us of happy holidays in Hawaii," adds Kate. And the hapless pool? "We loved it for 10 years, but we decided to fill it in and put in a spa."

Subject to heritage constraints, the front of the home stayed largely untouched. But it offered lots to love, with its stained-glass windows, cornicing and mouldings. Tim, however, juggled the layout. Where there were once four bedrooms off the hallway, now a lavish main bedroom suite with walk-in graces the right side, while a bedroom and study occupy the opposite side. He replaced the back with a light-filled open plan

at ground level, and upstairs two bedrooms were included for the girls, both with ensuites and a sitting area.

As you emerge from the compact hallway, that open plan is a revelation. Tim has designed a seamless indoor-outdoor area, with sliders and a pole connecting the living room to the adjacent barbecue area, so they read as one. Meanwhile, a crisp kitchen with a monumental Dekton bench and a high-set window revels in light and spaciousness.

"The oversized island bench allowed us to make a big impact," says Kristie. "We chose Dekton because of its amazing shell-like texture, perfect for a relaxed beachside home, and that ▶



monolithic block also serves as a cook's bench that seats six around one end."

A wall of warm timber veneer encloses the kitchen at one end, creating a clean, streamlined feel, while the fluted fireplace on an opposite wall beautifully bookends the room.

The palette for all the hard surfaces is "neutral, creamy, sandy and calm," says Kristie. She used Resene Truffle paint throughout, half strength in the traditional section for drama, but quarter strength in the rear to make it lighter. Timber floors add to the flow and the sense of unity.

Kate's love of pink finds expression in the dusty hued tiles in the powder room and cushions and fabrics throughout the open plan, while soft blues

and caramels in the serene main bedroom evoke the ocean and recall holidays past.

Kristie's stand-out furnishings are the large roman blind in the dining area for its soft colour, and the rugs with their swirling patterns and natural, pink-tinged tones, which act as a decorative base for the living and dining rooms.

But it's the revelatory entry that resonates the most. "It's a modest hallway with beautiful features, and then you step into the expansive and stunning back section, with its striking island," says Kristie. "But, above all, the fact Kate and Andrew love every aspect of their finished home fills us with the greatest satisfaction." ▶

Acton & Rumble: actonrumble.com.au.

THW Architects: thw.net.au.



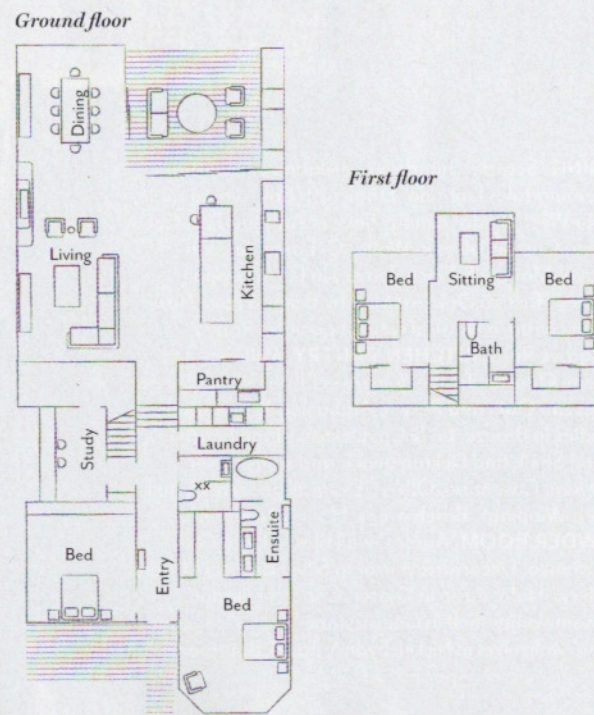
"We wanted lightness, but with a bit of fun, to remind us of happy holidays in Hawaii." KATE, OWNER

DINING 'Seattle' chandelier in Alabaster and Brass, Bloomingdales Lighting. Ethnicraft 'Bok' dining table, GlobeWest. 'Frida' dining chairs in Antique Tan, Coco Unika. Custom blind in Walter G 'Luxor' linen in Guava, Marlow & Finch. Joinery in Elton Group 'Evenex' Tuscan Oak. Artwork by Belinda Fox. 'New Morocco rug in Natural with Chocolate, Robyn Cosgrove Rugs. **KITCHEN/PANTRY** Walls painted Resene Quarter Truffle. Joinery in Elton Group 'Evenex' in Tuscan Oak, and Resene Alabaster. 'Curve' pull handles in Bronze, Lo & Co. Dekton island bench in Liquid Shell, and Dekton bench and splashback in Uyuni, Cosentino. Oliveri 'Essente' gooseneck pull mixer, Winnings. Bosch ovens, Harvey Norman. **POWDER ROOM** 'Aurora' wall tiles in Light Grey, Di Lorenzo. Decorative mirror in Silver Bronze, Mirror Gallery. 'Halo' basin in Oyster, Concrete Nation. Custom vanity shelf in Caesarstone 'Topus' concrete. 'Venn' wall mixer in Nickel, Sydney Tap & Bathroomware.



OUTDOOR 'Architect' sofa and armchairs in Natural and Light Grey, and 'Monaco' coffee table in Concrete, both Coco Republic. 'Saqqara' outdoor cushion in Atlantic, Walter G. 'Trinity' fan, ThreeSixty. **MAIN ENSUITE** 'Unique' travertine floor and wall tiles in Silver Minimal Naturale, Di Lorenzo. 'Abask' heated towel ladder in Brushed Stainless Steel, 'Venn' wall mixer in Nickel, Arcisan 'Synergii' bath in White Acrylic, all Sydney Tap & Bathroomware. **MAIN BEDROOM** Walls painted Resene Half Truffle. Custom 'Victoria' headboard in 'Cherbourg' linen in Navy, Westbury Textiles, made by H+J Furniture. 'Dusked Evo' wall light in White, Studio Enti. 'Trieste' cotton blanket in Sand, Bemboka. 'Mika' side table, Castlery. 'Praiano Riviera' cushions, Walter G. Hycraft 'Montrose' carpet in Mallard, Carpet Court.

THE LAYOUT



THE SOURCE

For a contemporary coastal aesthetic, look to nautical tones and elegant brass finishes.



Produced by Bethan Lacoba.

1 'Golden Wattle' cushion cover in Navy, \$195, Utopia Goods. 2 Bloomingdales 'Seattle' chandelier, \$2295, Luxe Lighting. 3 Visual Comfort 'Cordoba' large table lamp, \$1600, Bloomingdales Lighting. 4 Connector Fragment 6 artwork by Belinda Fox, \$9500, Arthouse Gallery. 5 AEG 60cm 'SteamBake' multi-function oven in Stainless Steel, \$1599, Winnings. 6 BassamFellows 'Tractor' counter stool in Walnut, \$2650, Living Edge. 7 Fisher & Paykel 498L slimline quad door fridge with ice and water dispenser in Black Stainless Steel, \$2599, Harvey Norman. 8 Linen quilt set in Marine Blue, \$380/queen, Carlotta+Gee. 9 'Nithya' bedside table in Light Grey, \$405, Interior Secrets. 10 'Luna' swivel chair in Tierra Linen Oat, \$2305, Coco Republic. H&G